

Cole's Residence

SUBMITTED BY

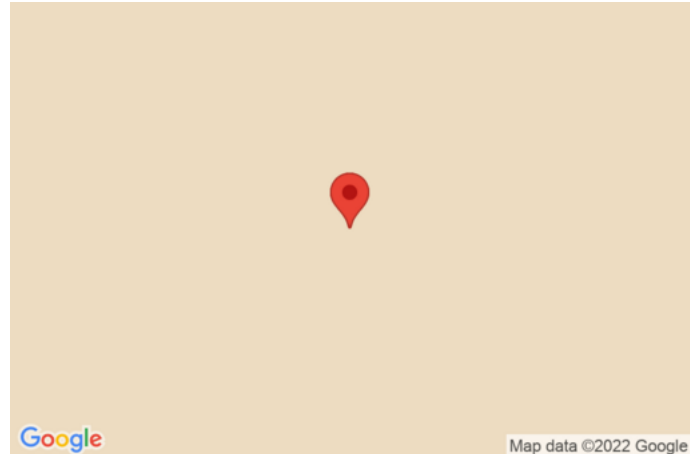
Morgan Restoration
kalmen.kellici@magicplan.app

CREATED ON

2022-12-20

LOCATION

3626 Gordon Street
91711 Claremont
California(CA)
USA



Total area 76.47 m ²	Floors 1	Rooms 6	Bathroom 1
---	--------------------	-------------------	----------------------

Water Damage Restoration Checklist

SUBJECT**Conducted on**

December 20, 2022

Prepared by

Lillian

Site of water damage

Burst pipe under sink and drywall stains.

Client's name - Phone number

Cole's-909-523-2408

WATER DAMAGE RESTORATION**Cause/s of water damage**

Burst/Leaking pipes

Sign/s of water damage

Water Stains

Take photos of water damage for insurance claims.

Yes

WATER DAMAGE INSPECTION

Cole's Residence

Identified and stopped the flow of the water source/s?

Yes

Water source/s

Groundwater

Contamination level

Little to none

Water contamination category

Category 1: White Water

Wet porous materials % of surface area

5% to 40%

Low evaporation materials (such as carpet, gypsum board, fiber-fill insulation, Concrete Masonry Unit (CMU) and textiles) level of moisture absorption

Minimal

Water damage class

Class 1

WATER EXTRACTION

Standing water extracted?

Yes

Surface water extracted?

Yes

Extraction equipment used

Portable wet/dry vacuums

Checked again for pockets of saturation?

Yes

Tools used to identify moisture

Moisture meter

DRYING AND DEHUMIDIFICATION

Opened windows and doors?

Yes

Turned on heavy-duty fans?

Yes

Cole's Residence

Used commercial-grade dehumidifiers?

Yes

Removed parts of walls and/or floors? If yes, add a note to give the reason why.

Yes

CLEANING AND SANITATION

Personal Protective Equipment

Yes

Disposable clothing or protective overalls

Yes

Rubber boots

Yes

N-95 mask/respirator

Yes

Goggles

Yes

Gloves

Yes

CLEANING EQUIPMENT

Used a negative air machine with HEPA filter/s?

Yes

Negative air machine/s used

Air Scrubber

Used antimicrobial solution to clean surfaces?

Yes

Antimicrobial solution used

Alcohol and water

Removed all mold and used mold control spray to prevent mold from reoccurring?

Yes

Repair/Reconstruction

Removed unsalvageable parts? (drywall below the flood line, low to medium density trim boards, carpet padding)

Yes

Cole's Residence

Sent carpet/s for deep cleaning?

No

Reused wooden trim boards?

No

Repaired drywall?

Yes

Major reconstruction necessary?

No

List or description of reconstruction needed:

Drywall replacement , painting , replacement of the broken pipes.

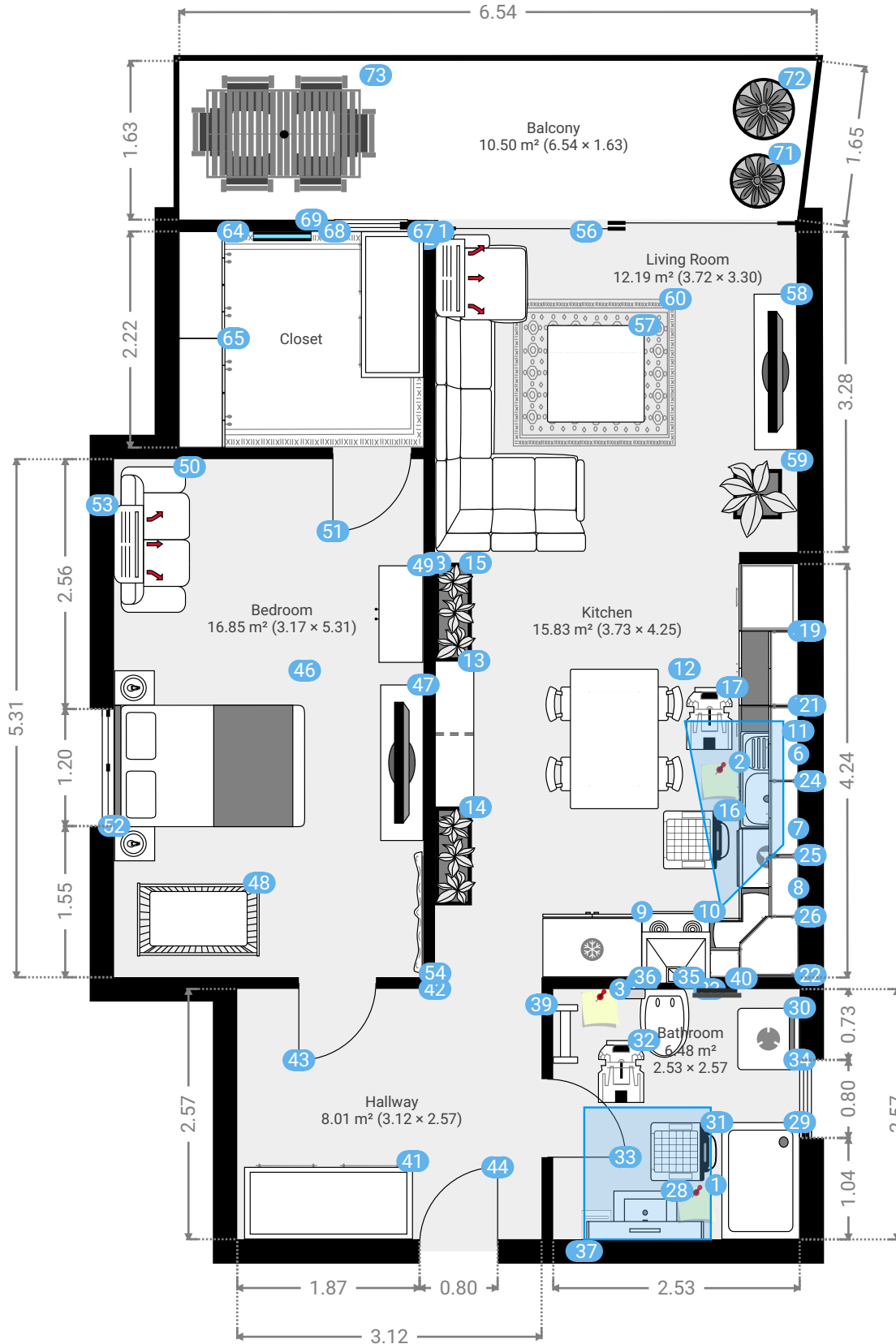
Cole's Residence

3626 Gordon Street, 91711 Claremont, California(CA), USA
 TOTAL AREA: 76.47 m² • LIVING AREA: 76.47 m² • FLOORS: 1 • ROOMS: 6



▼ Ground Floor

TOTAL AREA: 76.47 m² • LIVING AREA: 76.47 m² • ROOMS: 6



THIS FLOORPLAN IS PROVIDED WITHOUT WARRANTY OF ANY KIND. SENSOPIA DISCLAIMS ANY WARRANTY INCLUDING, WITHOUT LIMITATION, SATISFACTORY QUALITY OR ACCURACY OF DIMENSIONS.



1:63

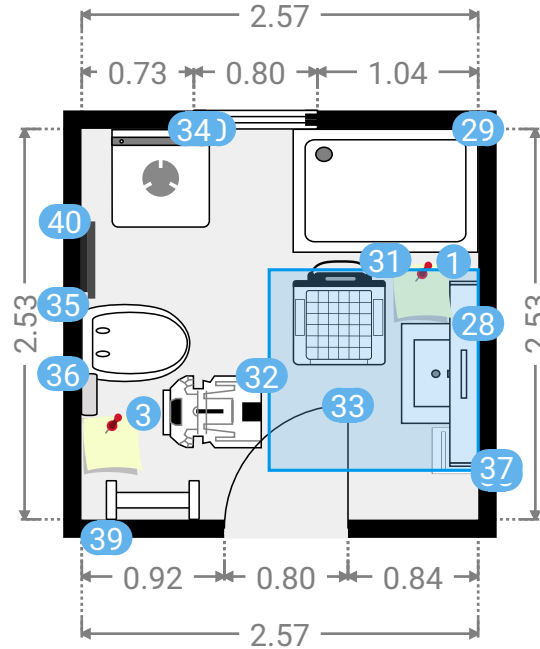
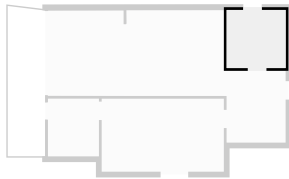
Cole's Residence

3626 Gordon Street, 91711 Claremont, California(CA), USA
TOTAL AREA: 76.47 m² • LIVING AREA: 76.47 m² • FLOORS: 1 • ROOMS: 6



▼ Bathroom Ground Floor

WIDTH: 2.57 m • LENGTH: 2.53 m
AREA: 6.48 m² • PERIMETER: 10.19 m



▼ Bathroom/Ground Floor

1 ANNOTATION

Photo



Notes

Burst pipe. Extracting water needed



3 ANNOTATION

Photo



Notes

Wall stains



Cole's Residence

3626 Gordon Street, 91711 Claremont , California(CA), USA
TOTAL AREA: 76.47 m² • LIVING AREA: 76.47 m² • FLOORS: 1 • ROOMS: 6



▼ Bathroom/Ground Floor

28 RECTANGULAR SINK

Dimensions

0.65 m x 0.50 m x 0.97 m (Width x Depth x Height)



29 RECTANGULAR SHOWER

Dimensions

1.20 m x 0.80 m x 2.10 m (Width x Depth x Height)



30 STACKED WASHER AND DRYER

Dimensions

0.64 m x 0.64 m x 1.80 m (Width x Depth x Height)



31 DESHUMIDIFIER

Dimensions

0.60 m x 0.68 m x 1.00 m (Width x Depth x Height)



32 AIR SCRUBBER

Dimensions

0.64 m x 0.47 m x 2.00 m (Width x Depth x Height)



33 HINGED DOOR

Dimensions

0.80 m x 2.04 m (Width x Height)



34 HUNG WINDOW

Dimensions

0.80 m x 1.20 m (Width x Height)



35 WALL HUNG TOILET

Dimensions

0.50 m x 0.34 m (Width x Height)



36 TOILET FLUSH

Dimensions

0.27 m x 0.17 m (Width x Height)



37 MIRROR CABINET

Dimensions

1.20 m x 0.70 m (Width x Height)



38 PAPER TOWEL DISPENSER

Dimensions

0.30 m x 0.35 m (Width x Height)



Cole's Residence

3626 Gordon Street, 91711 Claremont , California(CA), USA
TOTAL AREA: 76.47 m² • LIVING AREA: 76.47 m² • FLOORS: 1 • ROOMS: 6



▼ Bathroom/Ground Floor

39 TOWEL RADIATOR

Dimensions

0.60 m x 1.70 m (Width x Height)



40 WALL MOUNTED AIR DIFFUSER

Dimensions

0.50 m x 0.20 m (Width x Height)



Cole's Residence

3626 Gordon Street, 91711 Claremont , California(CA), USA
TOTAL AREA: 76.47 m² • LIVING AREA: 76.47 m² • FLOORS: 1 • ROOMS: 6



▼ Photos/Bathroom



Cole's Residence

3626 Gordon Street, 91711 Claremont , California(CA), USA
TOTAL AREA: 76.47 m² • LIVING AREA: 76.47 m² • FLOORS: 1 • ROOMS: 6



▼ Photos/Bathroom



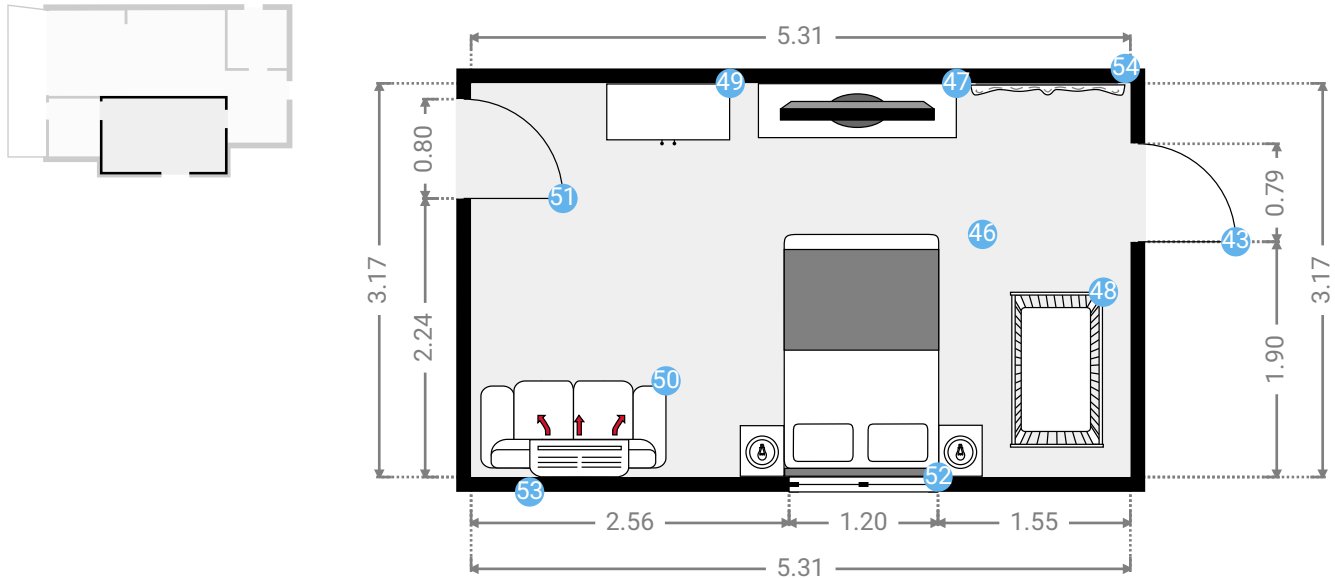
Cole's Residence

3626 Gordon Street, 91711 Claremont, California(CA), USA
 TOTAL AREA: 76.47 m² • LIVING AREA: 76.47 m² • FLOORS: 1 • ROOMS: 6



▼ Bedroom Ground Floor

WIDTH: 5.31 m • LENGTH: 3.17 m
 AREA: 16.85 m² • PERIMETER: 16.97 m



▼ Bedroom/Ground Floor

46 QUEEN BED WITH SIDE TABLES

Dimensions
 1.96 m x 1.96 m x 0.62 m (Width x Depth x Height)



47 TABLE WITH TV

Dimensions
 1.60 m x 0.44 m x 1.50 m (Width x Depth x Height)



48 CRIB

Dimensions
 0.75 m x 1.25 m x 0.70 m (Width x Depth x Height)



49 SHOWCASE (MODERN)

Dimensions
 1.00 m x 0.50 m x 2.00 m (Width x Depth x Height)

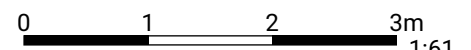


50 COUCH

Dimensions
 1.49 m x 0.70 m x 0.68 m (Width x Depth x Height)



THIS FLOORPLAN IS PROVIDED WITHOUT WARRANTY OF ANY KIND. SENSOPIA DISCLAIMS ANY WARRANTY INCLUDING, WITHOUT LIMITATION, SATISFACTORY QUALITY OR ACCURACY OF DIMENSIONS.



Cole's Residence

3626 Gordon Street, 91711 Claremont , California(CA), USA
TOTAL AREA: 76.47 m² • LIVING AREA: 76.47 m² • FLOORS: 1 • ROOMS: 6



▼ Bedroom/Ground Floor

51 HINGED DOOR

Dimensions

0.80 m x 2.04 m (Width x Height)



52 FRENCH WINDOW

Dimensions

1.20 m x 1.20 m (Width x Height)



53 WALL-MOUNTED AIR CONDITIONER

Dimensions

0.80 m x 0.50 m (Width x Height)



54 PAINTING

Dimensions

1.25 m x 1.00 m (Width x Height)



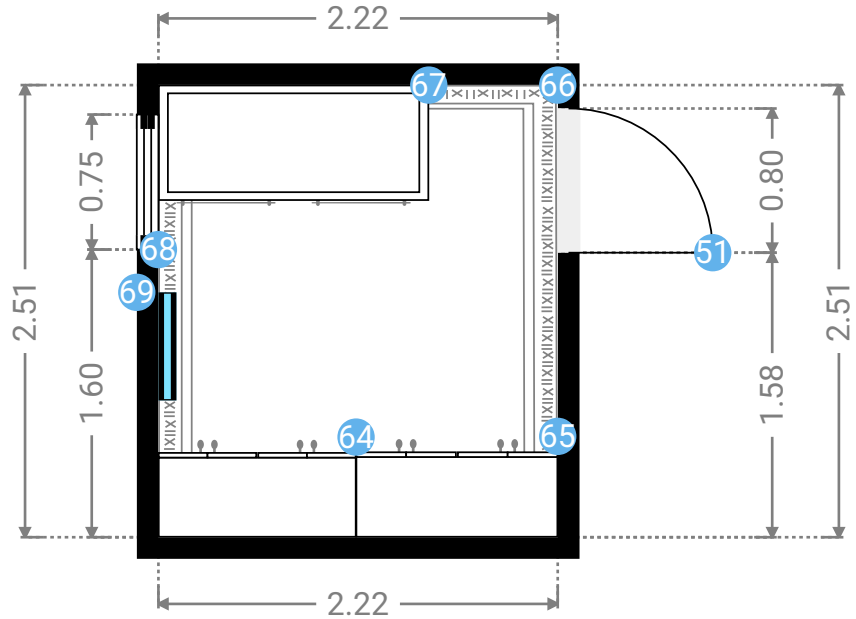
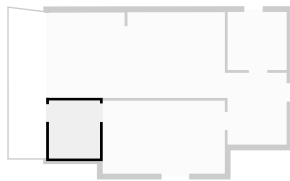
Cole's Residence

3626 Gordon Street, 91711 Claremont, California(CA), USA
 TOTAL AREA: 76.47 m² • LIVING AREA: 76.47 m² • FLOORS: 1 • ROOMS: 6



▼ Closet Ground Floor

WIDTH: 2.22 m • LENGTH: 2.51 m
 AREA: 5.56 m² • PERIMETER: 9.45 m



▼ Closet/Ground Floor

64 4 DOOR WARDROBE

Dimensions
 1.10 m x 0.56 m x 2.00 m (Width x Depth x Height)



65 4 DOOR WARDROBE

Dimensions
 1.12 m x 0.56 m x 2.00 m (Width x Depth x Height)



66 WHITE CARPET

Dimensions
 2.22 m x 2.51 m x 0.01 m (Width x Depth x Height)



67 CHEST OF DRAWERS

Dimensions
 1.50 m x 0.69 m x 0.70 m (Width x Depth x Height)

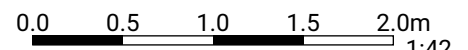


68 HUNG WINDOW

Dimensions
 0.75 m x 1.20 m (Width x Height)



THIS FLOORPLAN IS PROVIDED WITHOUT WARRANTY OF ANY KIND. SENSOPIA DISCLAIMS ANY WARRANTY INCLUDING, WITHOUT LIMITATION, SATISFACTORY QUALITY OR ACCURACY OF DIMENSIONS.



Cole's Residence

3626 Gordon Street, 91711 Claremont , California(CA), USA
TOTAL AREA: 76.47 m² • LIVING AREA: 76.47 m² • FLOORS: 1 • ROOMS: 6



▼ Closet/Ground Floor

69 SQUARE MIRROR

Dimensions

0.60 m x 0.60 m (Width x Height)



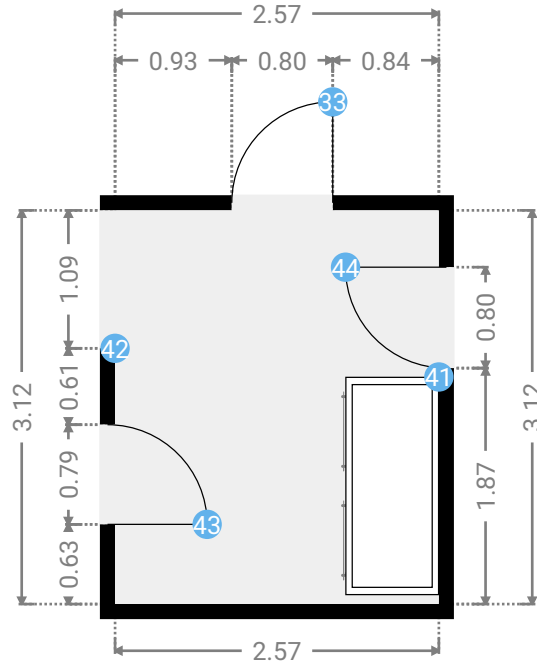
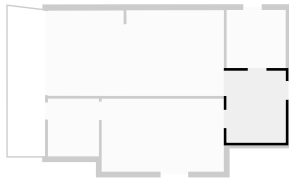
Cole's Residence

3626 Gordon Street, 91711 Claremont , California(CA), USA
 TOTAL AREA: 76.47 m² • LIVING AREA: 76.47 m² • FLOORS: 1 • ROOMS: 6



▼ Hallway Ground Floor

WIDTH: 2.57 m • LENGTH: 3.12 m
 AREA: 8.01 m² • PERIMETER: 11.37 m



▼ Hallway/Ground Floor

41 CHEST OF DRAWERS

Dimensions
 1.73 m x 0.80 m x 0.70 m (Width x Depth x Height)



42 OPENING

Dimensions
 1.09 m x 2.04 m (Width x Height)



43 HINGED DOOR

Dimensions
 0.79 m x 2.04 m (Width x Height)



44 HINGED DOOR

Dimensions
 0.80 m x 2.04 m (Width x Height)



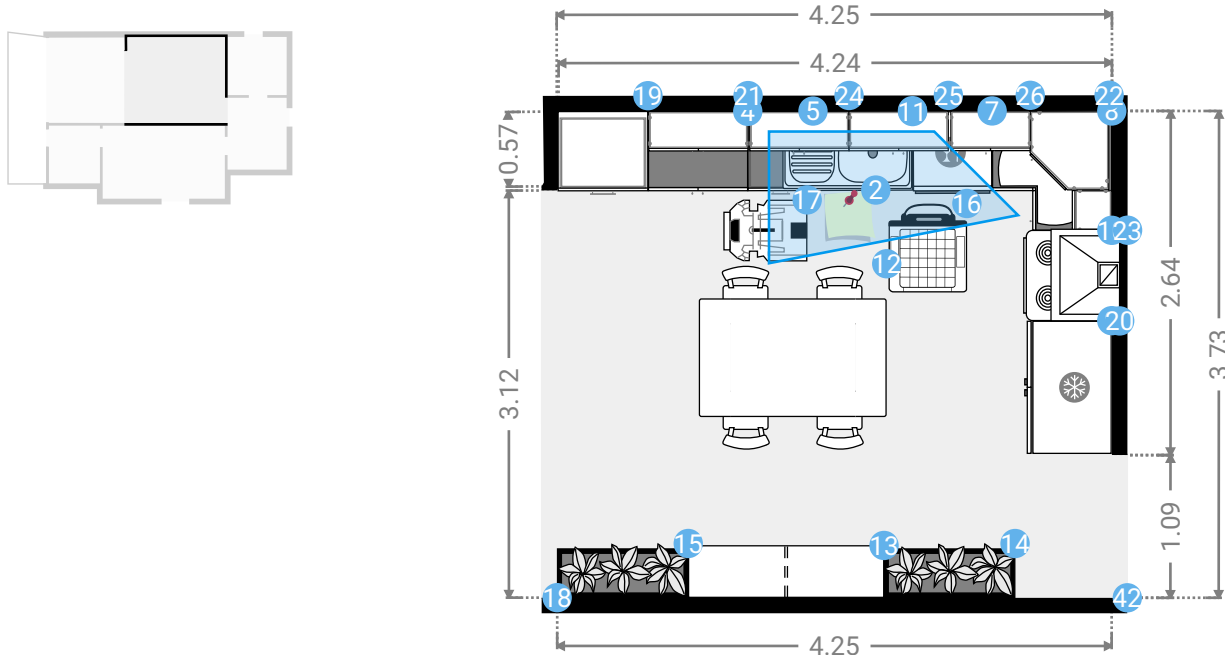
Cole's Residence

3626 Gordon Street, 91711 Claremont , California(CA), USA
 TOTAL AREA: 76.47 m² • LIVING AREA: 76.47 m² • FLOORS: 1 • ROOMS: 6



▼ Kitchen Ground Floor

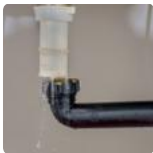
WIDTH: 4.25 m • LENGTH: 3.73 m
 AREA: 15.83 m² • PERIMETER: 15.95 m



▼ Kitchen/Ground Floor

2 ANNOTATION

Photo



Notes

Cracked pipes



4 BASE CABINET 30"

Dimensions

0.76 m x 0.61 m x 0.90 m (Width x Depth x Height)



5 BASE DRAWERS (RESIZABLE)

Dimensions

0.50 m x 0.61 m x 0.90 m (Width x Depth x Height)



Cole's Residence

3626 Gordon Street, 91711 Claremont , California(CA), USA
TOTAL AREA: 76.47 m² • LIVING AREA: 76.47 m² • FLOORS: 1 • ROOMS: 6



▼ Kitchen/Ground Floor

6 BASE CABINET (RESIZABLE)

Dimensions

0.76 m x 0.61 m x 0.90 m (Width x Depth x Height)



7 DISHWASHER

Dimensions

0.61 m x 0.64 m x 0.89 m (Width x Depth x Height)



8 CAROUSEL BASE CABINET 36"

Dimensions

0.91 m x 0.91 m x 0.90 m (Width x Depth x Height)



9 TWO-DOOR REFRIGERATOR

Dimensions

1.02 m x 0.67 m x 2.00 m (Width x Depth x Height)



10 ELECTRIC STOVE

Dimensions

0.69 m x 0.68 m x 0.95 m (Width x Depth x Height)



11 SINK WITH DRAINER

Dimensions

1.00 m x 0.60 m x 0.28 m (Width x Depth x Height)



12 RECT. TABLE WITH CHAIRS

Dimensions

1.44 m x 1.44 m x 0.92 m (Width x Depth x Height)



13 BOOKCASE

Dimensions

1.50 m x 0.40 m x 1.99 m (Width x Depth x Height)



14 LONG PLANTERS

Dimensions

1.00 m x 0.41 m x 0.79 m (Width x Depth x Height)



15 LONG PLANTERS

Dimensions

1.00 m x 0.41 m x 0.79 m (Width x Depth x Height)



16 DESHUMUDIFIER

Dimensions

0.60 m x 0.68 m x 1.00 m (Width x Depth x Height)



Cole's Residence

3626 Gordon Street, 91711 Claremont , California(CA), USA
TOTAL AREA: 76.47 m² • LIVING AREA: 76.47 m² • FLOORS: 1 • ROOMS: 6



▼ Kitchen/Ground Floor

17 AIR SCRUBBER

Dimensions

0.64 m x 0.47 m x 2.00 m (Width x Depth x Height)



18 OPENING

Dimensions

3.12 m x 0.00 m (Width x Height)



19 TALL CABINET (RESIZABLE)

Dimensions

0.69 m x 2.00 m (Width x Height)



20 COOKING HOOD

Dimensions

0.70 m x 0.70 m (Width x Height)



21 DOUBLE CAB. (RESIZABLE)

Dimensions

0.76 m x 0.90 m (Width x Height)



22 RIGHT CORNER WALL CAB. 24"

Dimensions

0.61 m x 0.90 m (Width x Height)



23 SINGLE WALL CABINET 12"

Dimensions

0.30 m x 0.90 m (Width x Height)



24 DOUBLE WALL CABINET 30"

Dimensions

0.76 m x 0.90 m (Width x Height)



25 DOUBLE WALL CABINET 30"

Dimensions

0.76 m x 0.90 m (Width x Height)



26 DOUBLE CAB. (RESIZABLE)

Dimensions

0.61 m x 0.90 m (Width x Height)



Cole's Residence

3626 Gordon Street, 91711 Claremont , California(CA), USA
TOTAL AREA: 76.47 m² • LIVING AREA: 76.47 m² • FLOORS: 1 • ROOMS: 6



▼ Photos/Kitchen



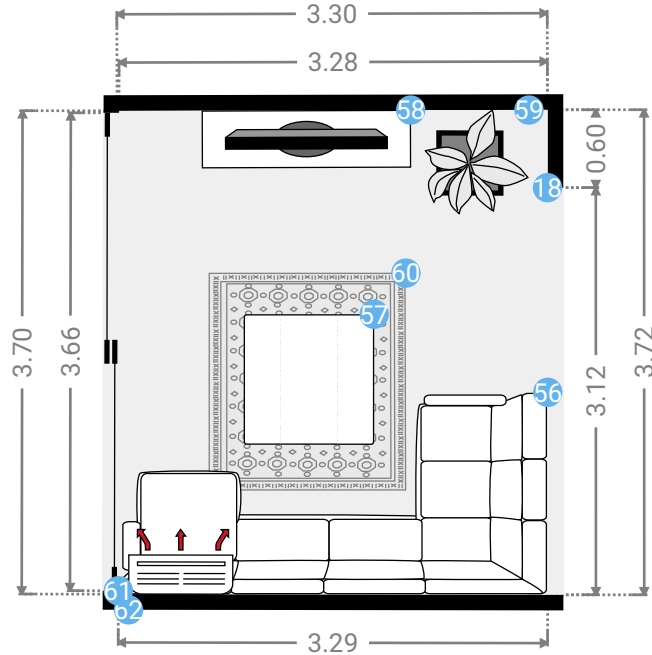
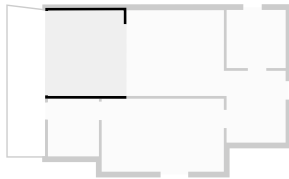
Cole's Residence

3626 Gordon Street, 91711 Claremont, California(CA), USA
 TOTAL AREA: 76.47 m² • LIVING AREA: 76.47 m² • FLOORS: 1 • ROOMS: 6



▼ Living Room Ground Floor

WIDTH: 3.30 m • LENGTH: 3.72 m
 AREA: 12.19 m² • PERIMETER: 13.99 m



▼ Living Room/Ground Floor

56 COUCH SECT. 4 PIECES - LEFT CHAISE

Dimensions
 3.29 m x 1.55 m x 0.94 m (Width x Depth x Height)



57 RECTANGULAR TABLE

Dimensions
 1.00 m x 1.00 m x 0.80 m (Width x Depth x Height)



58 TABLE WITH TV

Dimensions
 1.60 m x 0.44 m x 1.50 m (Width x Depth x Height)



59 PLANT

Dimensions
 0.80 m x 0.80 m x 0.79 m (Width x Depth x Height)



60 CARPET

Dimensions
 1.51 m x 1.66 m x 0.01 m (Width x Depth x Height)



Cole's Residence

3626 Gordon Street, 91711 Claremont , California(CA), USA
TOTAL AREA: 76.47 m² • LIVING AREA: 76.47 m² • FLOORS: 1 • ROOMS: 6



▼ Living Room/Ground Floor

61 PATIO DOOR

Dimensions

3.66 m x 2.04 m (Width x Height)



62 WALL-MOUNTED AIR CONDITIONER

Dimensions

0.80 m x 0.50 m (Width x Height)



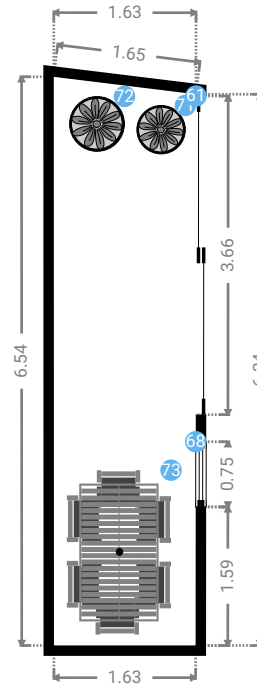
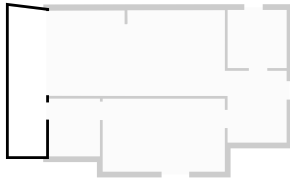
Cole's Residence

3626 Gordon Street, 91711 Claremont, California(CA), USA
TOTAL AREA: 76.47 m² • LIVING AREA: 76.47 m² • FLOORS: 1 • ROOMS: 6



▼ Balcony Ground Floor

WIDTH: 1.63 m • LENGTH: 6.54 m
AREA: 10.50 m² • PERIMETER: 16.15 m



▼ Balcony/Ground Floor

71 PLANT

Dimensions
0.56 m x 0.56 m x 0.79 m (Width x Depth x Height)



72 PLANT

Dimensions
0.63 m x 0.63 m x 0.79 m (Width x Depth x Height)



73 RECT. TABLE WITH CHAIRS

Dimensions
1.89 m x 1.20 m x 1.00 m (Width x Depth x Height)

