



ESTIMATE

SUBMITTED BY
Kitchen Remodels New Interiors

DATE ISSUED
2021-09-06

SUBMITTED TO
Catherine Bean
3226 Johnson Street
27560 Raleigh
NC
United States
919-332-9770

PROJECT LOCATION
3226 Johnson Street
27560 Raleigh
NC
United States

Catherine Bean - Cabinet Installation

Services and Labor

Cabinet Materials

Subtotal	\$ 9,495.00
Taxes	\$ 712.12
Total	\$ 10,207.12

Catherine Bean - Cabinet Installation

3226 Johnson Street, 27560 Raleigh, NC, United States

TOTAL AREA: 490.57 sq ft • LIVING AREA: 490.57 sq ft • FLOORS: 1 • ROOMS: 1



Estimate Introduction

This is an example of how your estimate export would look like.

The export sections related to prices, room details, and single articles are customizable in the app - you can easily pick what you want to have displayed on your estimate export.

Depending on your project and use case, you can either customize the estimates and integrate them into your current workflow or directly send them to your prospect or client for approval.

Catherine Bean - Cabinet Installation

3226 Johnson Street, 27560 Raleigh, NC, United States
TOTAL AREA: 490.57 sq ft • LIVING AREA: 490.57 sq ft • FLOORS: 1 • ROOMS: 1



Cost breakdown

Services and Labor

ITEM NUMBER	DESCRIPTION	QUANTITY	UNIT PRICE	TOTAL
03.0002	Services and Labor			\$ 3,965.00
			Standard Tax Rate	7.50%
				\$ 297.38
				Services and Labor services total: \$ 4,262.38

Cabinet Materials

ITEM NUMBER	DESCRIPTION	QUANTITY	UNIT PRICE	TOTAL
03.0001	Cabinet Materials			\$ 5,530.00
			Standard Tax Rate	7.50%
				\$ 414.75
				Cabinet Materials services total: \$ 5,944.75

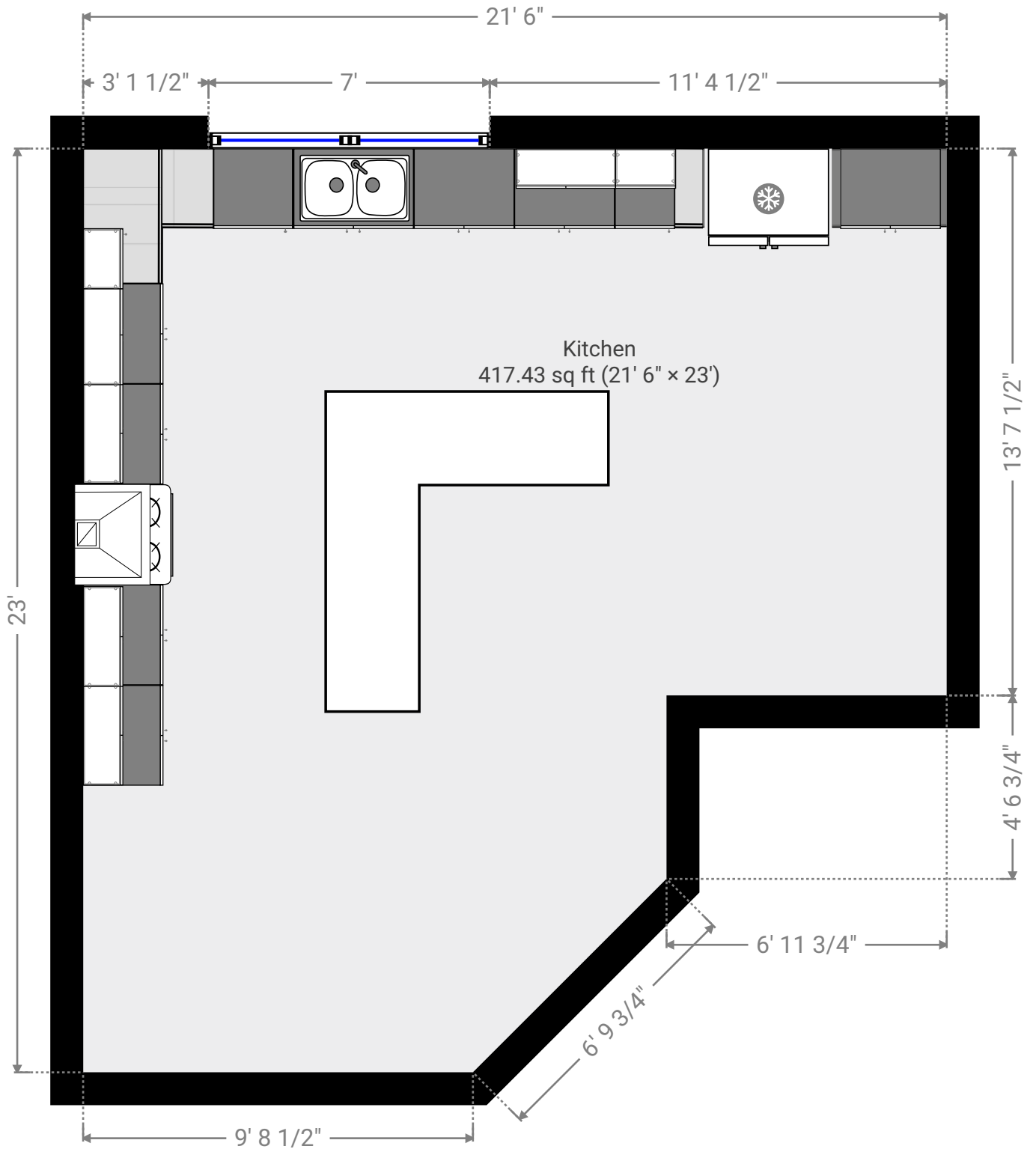
Catherine Bean - Cabinet Installation

3226 Johnson Street, 27560 Raleigh, NC, United States
TOTAL AREA: 490.57 sq ft • LIVING AREA: 490.57 sq ft • FLOORS: 1 • ROOMS: 1



▼ Ground Floor

TOTAL AREA: 490.57 sq ft • LIVING AREA: 490.57 sq ft • ROOMS: 1



THIS FLOORPLAN IS PROVIDED WITHOUT WARRANTY OF ANY KIND. SENSOPIA DISCLAIMS ANY WARRANTY INCLUDING, WITHOUT LIMITATION, SATISFACTORY QUALITY OR ACCURACY OF DIMENSIONS.

0' 2' 4' 6' 1:43

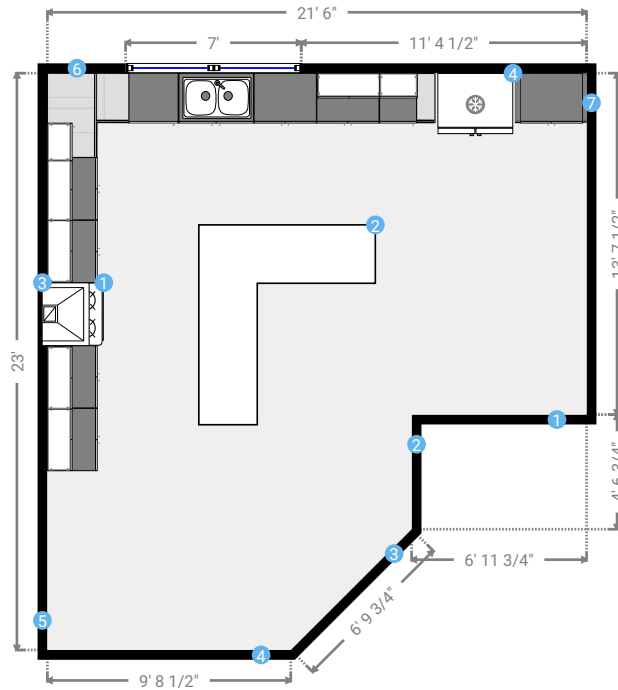
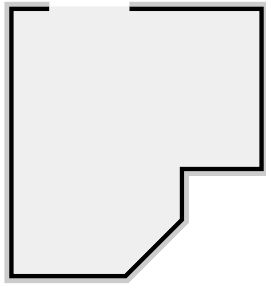
Catherine Bean - Cabinet Installation

3226 Johnson Street, 27560 Raleigh, NC, United States
 TOTAL AREA: 490.57 sq ft • LIVING AREA: 490.57 sq ft • FLOORS: 1 • ROOMS: 1



▼ Kitchen Ground Floor

WIDTH: 21' 6" • LENGTH: 23'
 AREA: 417.43 sq ft • PERIMETER: 86' 2 1/4"



▼ Kitchen Ground Floor

Cabinet Materials

03.0001	Cabinet Materials	\$ 5,530.00
---------	-------------------	-------------

Cabinet Materials services total: \$ 5,530.00

Services and Labor

03.0002	Services and Labor	\$ 3,965.00
---------	--------------------	-------------

Services and Labor services total: \$ 3,965.00

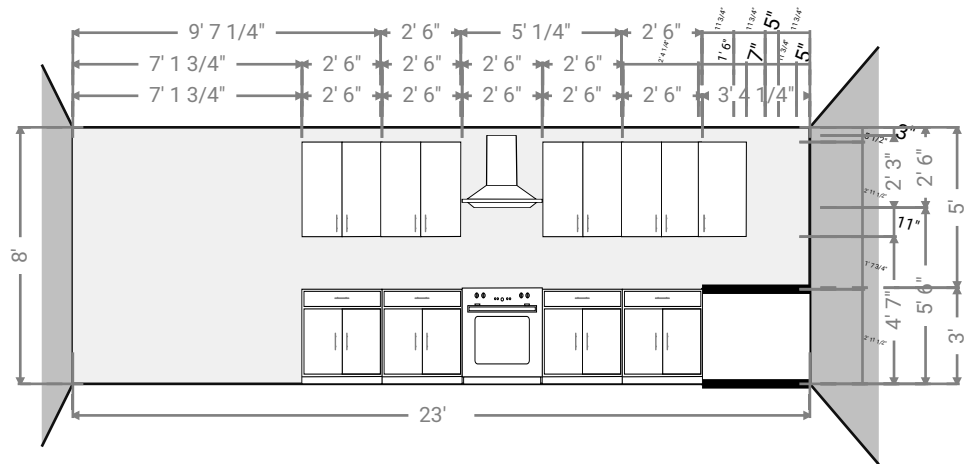
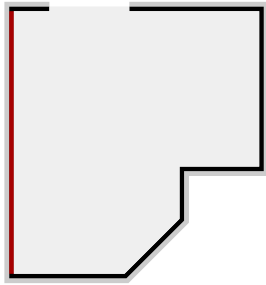
Catherine Bean - Cabinet Installation

3226 Johnson Street, 27560 Raleigh, NC, United States
 TOTAL AREA: 490.57 sq ft • LIVING AREA: 490.57 sq ft • FLOORS: 1 • ROOMS: 1



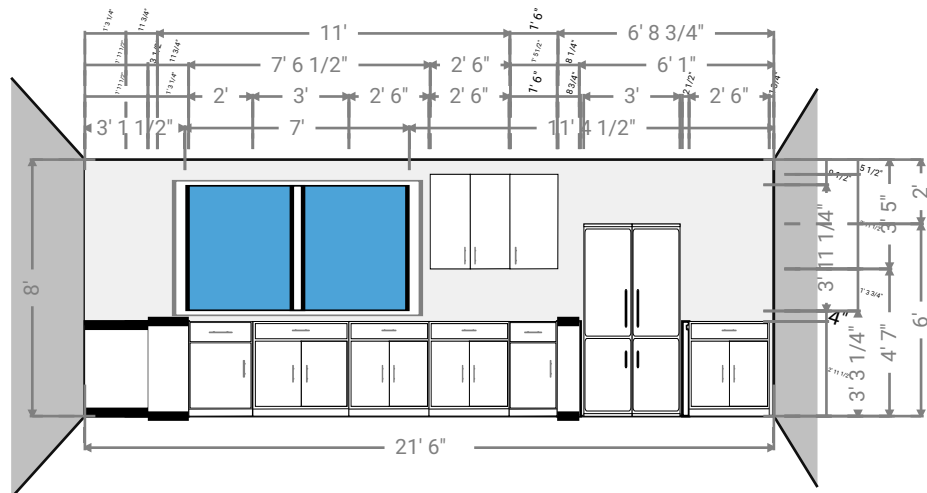
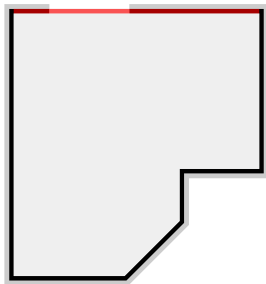
▼ Kitchen Ground Floor

WIDTH: 21' 6" • LENGTH: 23'
 AREA: 417.43 sq ft • PERIMETER: 86' 2 1/4"



▼ Kitchen Ground Floor

WIDTH: 21' 6" • LENGTH: 23'
 AREA: 417.43 sq ft • PERIMETER: 86' 2 1/4"



Catherine Bean - Cabinet Installation

3226 Johnson Street, 27560 Raleigh, NC, United States

TOTAL AREA: 490.57 sq ft • LIVING AREA: 490.57 sq ft • FLOORS: 1 • ROOMS: 1



Notes and payment terms

Add your invoicing conditions and/or payment terms to this section. You can also add any other project-related notes that you would like to share with your prospect or client.