

John Jacob Property

SUBMITTED BY
Benjamin Brown
bbr@magicplan.app

CREATED ON
2021-09-02

LOCATION
4139 Colony Street
28801 Asheville
North Carolina
United States

Total area 401.59 sq ft	Floors 1	Rooms 1	Bathroom 1
-----------------------------------	--------------------	-------------------	----------------------

Equipment Form

Custom Forms

AFD / Scrubber Used?
Yes

Necessary CFM requirements per OSHA regulations
54

Number of AFD / Scrubbers used?
1

Air Mover Used?
No

Dehumidifier used?
Yes

Containment needed?
Yes

Floor Protection needed?
Yes

What type of floor protection?
6mm Plastic

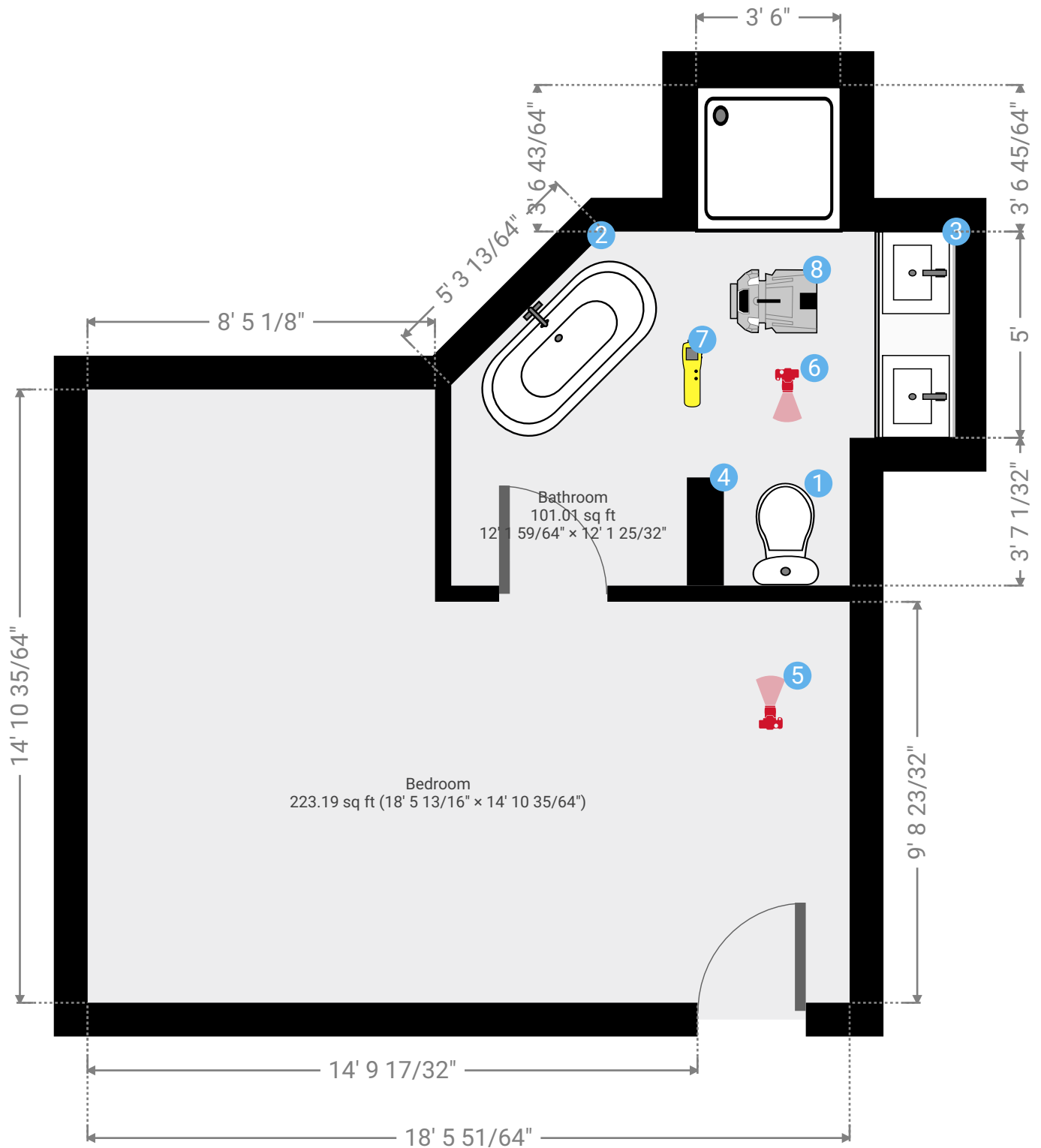
John Jacob Property

4139 Colony Street, 28801 Asheville, North Carolina, United States
TOTAL AREA: 401.59 sq ft • LIVING AREA: 401.59 sq ft • FLOORS: 1 • ROOMS: 1



▼ Ground Floor

TOTAL AREA: 401.59 sq ft • LIVING AREA: 401.59 sq ft • ROOMS: 1



This is an example of how your report export would look like.

The display of dimensions, pictures, and objects is set in the app and can be easily customizable. The custom forms are created and managed in the cloud and are assigned to a project on a workspace and/or team level.



1:42

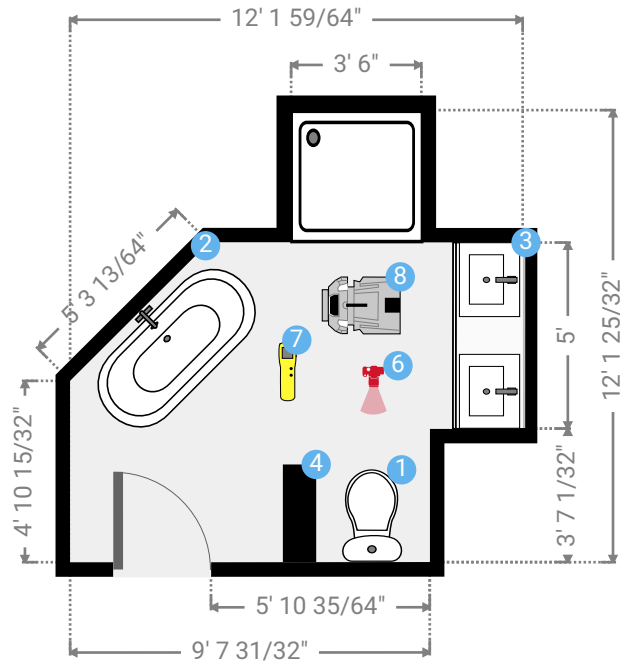
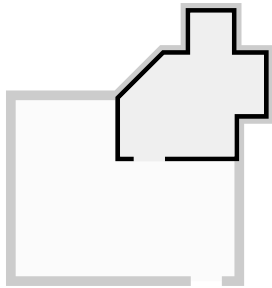
John Jacob Property

4139 Colony Street, 28801 Asheville, North Carolina, United States
 TOTAL AREA: 401.59 sq ft • LIVING AREA: 401.59 sq ft • FLOORS: 1 • ROOMS: 1



▼ Bathroom Ground Floor

WIDTH: 12' 1 59/64" • LENGTH: 12' 1 25/32"
 AREA: 101.01 sq ft • PERIMETER: 46' 5 3/16"



▼ Bathroom/Ground Floor

1 TOILET

Height
2' 6 7/8"



2 FREESTANDING BATH

Height
1' 8"



3 VANITY CABINET

Height
3' 1/16"



4 PARTITION WALL

Height
3'

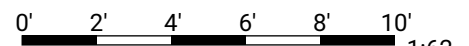


6 PHOTO

Notes
Perspective of water damage from bathroom perspective.



This is an example of how your report export would look like.



The display of dimensions, pictures, and objects is set in the app and can be easily customizable. The custom forms are created and managed in the cloud and are assigned to a project on a workspace and/or team level.

John Jacob Property

4139 Colony Street, 28801 Asheville, North Carolina, United States
TOTAL AREA: 401.59 sq ft • LIVING AREA: 401.59 sq ft • FLOORS: 1 • ROOMS: 1



▼ Bathroom/Ground Floor

6 PHOTO

Photos



Photo 1



Photo 2



7 HUMIDITY / TEMP. MEASURE

Height

6' 6 47/64"

Atmospheric Log

Custom Forms

Atmospheric Measurements needed?

Yes

Day 1

Nov. 19 / 72.9° F / 80%

Day 2

Nov. 20 / 77.5° F / 67.2%

Day 3

Nov. 21 / 81.2° F / 48.5%

Day 4

Nov. 22 / 78.2° F / 39.2%

Day 5

Nov. 23 / 80.3° F / 28.3%



8 AIR SCRUBBER

Notes

HEPA 500 - 250 CFM

Height

6' 6 47/64"



This is an example of how your report export would look like.

The display of dimensions, pictures, and objects is set in the app and can be easily customizable. The custom forms are created and managed in the cloud and are assigned to a project on a workspace and/or team level.

John Jacob Property

4139 Colony Street, 28801 Asheville, North Carolina, United States

TOTAL AREA: 401.59 sq ft • LIVING AREA: 401.59 sq ft • FLOORS: 1 • ROOMS: 1



▼ Photos/Bathroom

6 Photo Photo 1



This is an example of how your report export would look like.

The display of dimensions, pictures, and objects is set in the app and can be easily customizable. The custom forms are created and managed in the cloud and are assigned to a project on a workspace and/or team level.

John Jacob Property

4139 Colony Street, 28801 Asheville, North Carolina, United States

TOTAL AREA: 401.59 sq ft • LIVING AREA: 401.59 sq ft • FLOORS: 1 • ROOMS: 1



▼ Photos/Bathroom

6 Photo Photo 2



This is an example of how your report export would look like.

The display of dimensions, pictures, and objects is set in the app and can be easily customizable. The custom forms are created and managed in the cloud and are assigned to a project on a workspace and/or team level.

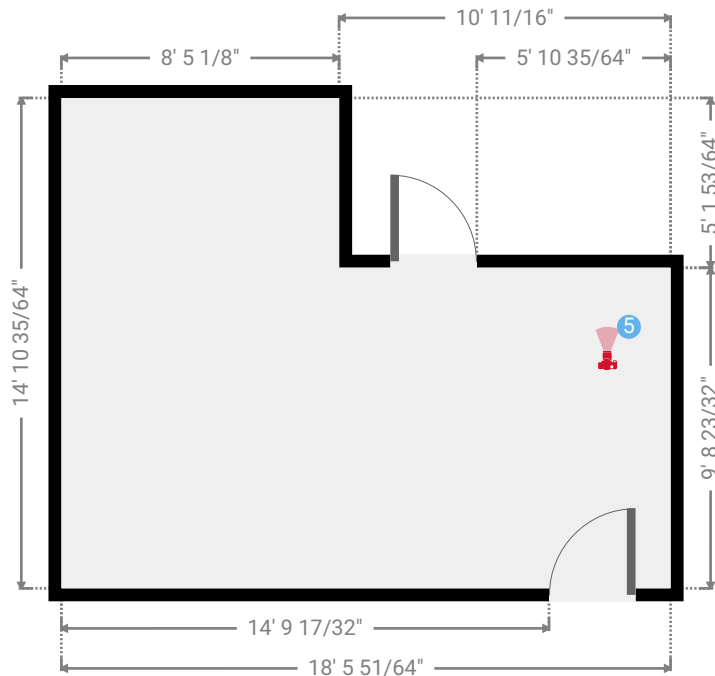
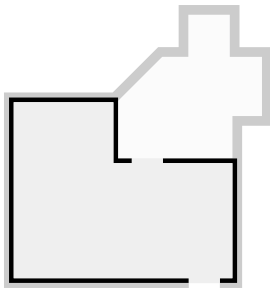
John Jacob Property

4139 Colony Street, 28801 Asheville, North Carolina, United States
TOTAL AREA: 401.59 sq ft • LIVING AREA: 401.59 sq ft • FLOORS: 1 • ROOMS: 1



▼ Bedroom Ground Floor

WIDTH: 18' 5 13/16" • LENGTH: 14' 10 35/64"
AREA: 223.19 sq ft • PERIMETER: 66' 8 45/64"



▼ Bedroom/Ground Floor

5 PHOTO

Notes
Perspective of water damage from the bedroom perspective.

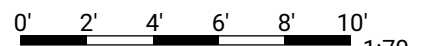


Photos



This is an example of how your report export would look like.

The display of dimensions, pictures, and objects is set in the app and can be easily customizable. The custom forms are created and managed in the cloud and are assigned to a project on a workspace and/or team level.



John Jacob Property

4139 Colony Street, 28801 Asheville, North Carolina, United States

TOTAL AREA: 401.59 sq ft • LIVING AREA: 401.59 sq ft • FLOORS: 1 • ROOMS: 1



▼ Photos/Bedroom



This is an example of how your report export would look like.

The display of dimensions, pictures, and objects is set in the app and can be easily customizable. The custom forms are created and managed in the cloud and are assigned to a project on a workspace and/or team level.